



## Viola M2M Gateway

Provide static IP addresses and secure communication to your Arctic devices

## Connect your remote sites to your internal network

Viola M2M Gateway is an industrial quality server with pre-installed software for secure communication between central control room and remote sites with Arctic devices. With Viola's complete communication solution you are able to expand your Ethernet over wireless (LTE/3G/EDGE/GPRS) networks and integrate your remote locations as part of your local network with Viola M2M Gateway and Viola's Arctic products.

Viola's communication solution is mobile operator independent as only standard SIM cards are needed in Arctic devices. SIM cards from multiple operators can be used in a single system when required. This enables flexible and cost effective maintenance and modifications of the communication solution.

No distance limitations! Even global systems are possible when commercial wireless networks are available. Secure and two-way communication (VPN and static IP addresses) is provided with Viola M2M Gateway.

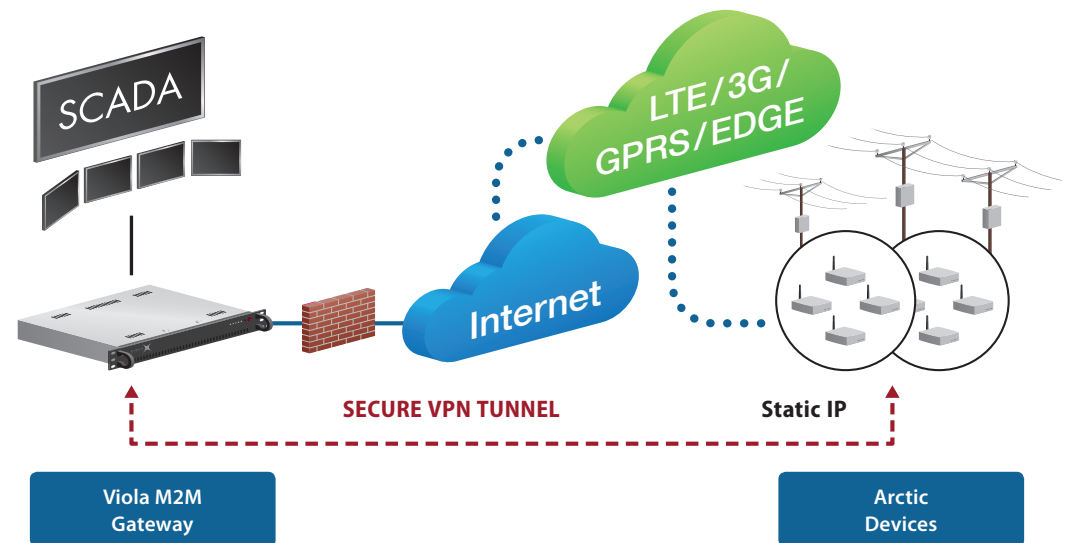


Viola M2M Gateway is connected to a fixed line internet connection by internet service provider. Viola M2M Gateway provides private and static IP addresses to Arctic devices. VPN tunnels are established and maintained between Viola M2M Gateway and Arctic devices.

There is no exact limitation for the number of Arctic devices to be connected to one Viola M2M Gateway, but it is especially designed for small and medium size systems. Recommended maximum number of Arctic devices to be connected is 250.

Remote sites can be seen as part of a company's internal network leading to seamless operation with locations using fixed line connections from the central control room personnel point of view.

Easy installation – graphical user interface used with an internet browser. ■



## KEY FEATURES

- Industrial grade server for Arctic devices
- Expands Ethernet over wireless network
- Mobile operator independent static IP addressing for connected Arctic devices enabling two-way communication
- Easy and quick to install and configure
- VPN for secure communication
- Built-in Firewall
- Open VPN for remote management connection

## APPLICATION EXAMPLES

- Expand Ethernet over wireless (LTE/3G/EDGE/ GPRS) networks
- Provide Internet access to locations without fixed connections
- Electricity networks (Feeder Stations, Substations)
- Road weather stations
- Surveillance systems
- Trucks, fork lifts, cranes
- Security systems
- Credit card verifications, POS, ATM

## SOFTWARE

Viola M2M Gateway includes a pre-installed specific software which enables VPN connection between company network and remote Arctic devices providing same time static IP addresses to Arctic devices.

## CONFIGURATION & MANAGEMENT

Viola M2M Gateway is configured and managed by a secure https connection.

You can configure and view the status of the remote Arctics and configure the VPN connection between Viola M2M Gateway and an Arctic device.

## HARDWARE

### Processor Environment

- Core 2 Duo

### Memory

- 1 GB RAM
- 250 GB hard drive

### Power

- 100 – 240 VAC (5A max)

### Casing

- Metal, 19" rack mountable

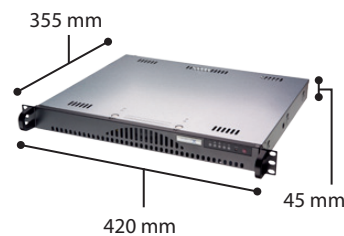
### Environment

Temperature ranges:  
0 to +45 °C  
-20 to +45 °C (storage)  
Humidity 10 to 90 % RH

### Approvals

CE, FCC

## DIMENSIONS



## NETWORK INTERFACES

### Ethernet

- 2 x LAN
- 10/100 Base-T Shielded RJ45

## NETWORK REQUIREMENTS AND WARRANTY

### Network requirements for Viola M2M Gateway

- Requires public and static IP address (provided by ISP)
- The device can be installed behind company firewall or in DMZ.

### Warranty

- 3 years limited warranty

## ORDERING INFORMATION

Code	Product
2500	Viola M2M Gateway

## OPTIONS

Code	Product
------	---------

### Ordering address:

Viola Systems Ltd.  
Lemminkäisenkatu 14 - 18 B  
FI-20520 Turku, Finland  
Phone + 358 (0)20 1226 226  
Fax + 358 (0)20 1226 220  
sales@violasystems.com  
www.violasystems.com



2012-06-29